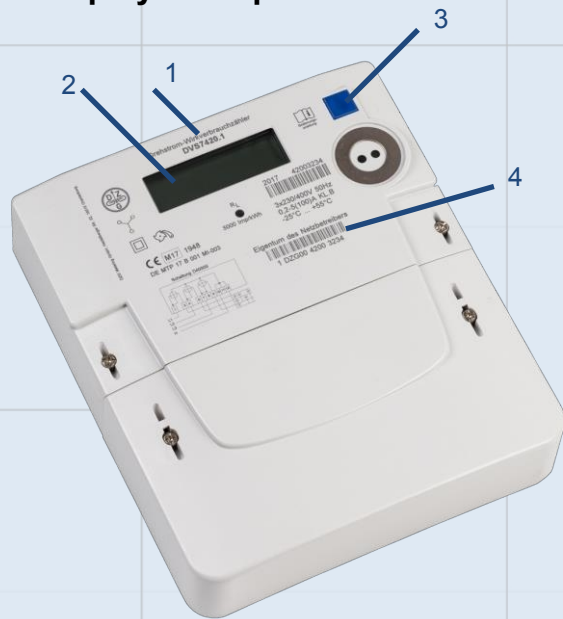


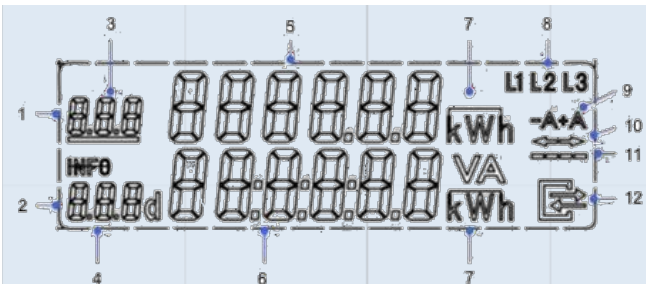
Your electronic electricity meter

DVS74/DWS74 at a glance

The display and operation



- 1. Model designation
- 2. Display
- 3. Information button (PIN)
- 4. Ownership information



- 1. Display sections for billing-relevant meter readings
- 2. Information line for non-billing-related information
- 3./4. OBIS marking
 - Pln** PIN entry
 - P** Current power
 - HIS** Historical values
 - Inf** Switch display range Push record
- Pln** Toggle pin protection on or off
- 1d** Historical consumption for current day and 730 previous values
- 7d** Historical consumption for the current 7 days and 104 previous values
- 30d** Historical consumption for the current 30 days and 24 previous values
- 365d** Historical consumption for the current 365 days and 2 previous values

- 5. Meter reading display
- 6. Consumption display
- 7. Units:
 - kWh, W
- 8. Phase indicator
- 9. Energy direction indicator
 - A+ Purchase from energy supplier
 - A- Feeding electricity into the grid, e.g. PV system
- 10. Current energy flow
 - > Supply
 - <- Feed-in
- 11. Current power
- 12. Communication when connected to a smart meter gateway



Accessing additional information

The meter is operated using the blue button or the built-in light sensor (flashlight icon).

Here, a short press of the button = a short light pulse.

Pressing the button takes you to the information menu. The individual menu items are accessed by a short press of the button.

If your meter has different counters, e.g., for PV systems, the values with the OBIS number 1.8.0 (A+) are displayed first, followed by 2.8.0 (A-).

Enter PIN:

When prompted to enter your **PIN**, please proceed as follows:

- Display on the LCD with PIN and the first digit of the PIN = 0
- Select the desired number by briefly pressing the button.
- Once this is reached, wait three seconds until the counter advances to the next digit. Now press the button again until you reach your

same way.

- Once all digits have been entered, the information line is activated

Enable/Disable PIN:

After the historical values are displayed, you will be taken to the menu item PIN on / PIN off. If you do not want other people to view your historical consumption values, activate PIN protection. To do this, hold down the button. "PIN on" will appear. Of course, you can also deactivate your PIN protection this way.

Deleting your historical consumption values:

To delete your values, go to the HIS CLr menu

item

and hold down the button until HIS

CLr on

appears.

Release the button and press it again for longer than 5 seconds to permanently delete.

General

After 120 seconds, the timer resets to its initial state.

DZG Metering GmbH

Legal form: Limited Liability Company

Headquarters in Oranienburg; Neuruppin Local Court; HRB 7193 NP