



BelSenso FM432g

LoRa Gas Tracker



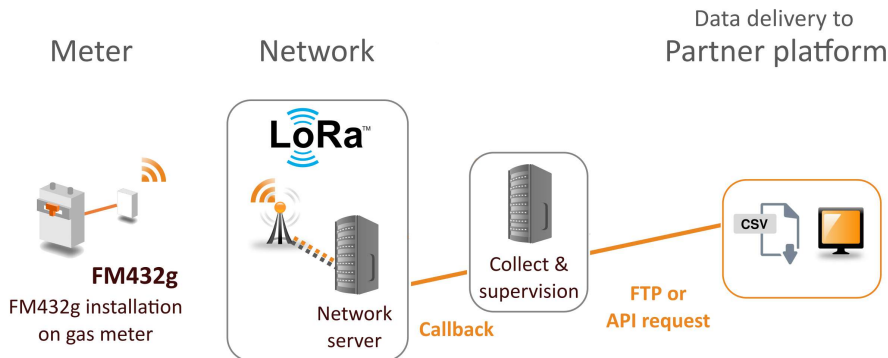
BelSenso FM432g is a universal sensor transmitting gas consumption data from an existing meter to a server. It provides the ideal starting point for analyzing the level of consumption and offers a complete interoperability with IoT LoRa networks in order to rapidly report any change. It is the ideal device for deployment of energy efficiency services dedicated to Small and Medium Buildings, especially in the SoHo and residential markets.

Benefits

- ⇒ **Universal:** designed for all gas meters with mechanical display
- ⇒ **Plug & Play:** self installation (< 5mn)
- ⇒ **Precision:** monitoring consumption every 10mn or 15mn
- ⇒ **Autonomy:** 5 years with battery
- ⇒ **Certification:** ATEX Zone 1



Operational



Implementations

- ⇒ **Energy Efficiency in buildings:** monitoring the general gas consumption
- ⇒ **Budget Energy control for residential:** supervision of consumption trends
- ⇒ **Data analytics:** identification of end-uses through peak detection

General and technical features

	BelSenso FM432g	
Input	Optical reading of one of the digits of the mechanical display Detection of digit rotation	
Output	LPWAN 868 Mhz Network - LoRaWan 1.0 Internal antenna (PCB) - RF Power 14 dbm (25mw)	
Operational	Fixing with adhesive pads (3M) Orange, Red and Green LED indicators T°: -15°C to +45°C	
Data	Load curve measurement every 10mn, 15mn Transmission of 20 messages/day (*) Data delivery (csv/json format)using FTP or API request.	
Power supply	Internal battery 3.6V, autonomy of 5 years	
Certification	ATEX zone 1: II 2 G Ex ib op is IIA T3 Gb	
Size & Weight	Optical reader weight: 18gr (with cable) height: 34mm width: 46mm (without cable) depth: 15mm	Radio box weight: 130gr height: 94mm width: 74mm depth: 30mm

FM432g



Reference

FM432g_10mn	LoRa Gas Tracker - data 10mn (**)
FM432g_15mn	LoRa Gas Tracker - data 15mn (**)

(*) Based on complete network availability

(**) The Radio Box includes 2 Lithium size A batteries

Contact: