



LWL02 – LoRaWAN Door Sensor User Manual

Document Version: 1.2

Image Version: v1.3

Version	Description	Date
1.0	Release	2021-May-16
1.1	Fix payload description error	2021-Jun-3
1.2	Add More Battery Description	2021-Jul-1

1. Introduction	4
1.1 What is LWL02 LoRaWAN Door Sensor	4
1.2 Features	5
1.3 Applications	5
1.4 Dimension	5
1.5 Firmware Change log	5
2. Power ON LWL02	6
3. How to install LWL02	6
4. Operation Mode	7
4.1 How it works?	7
4.2 Example to join LoRaWAN network	7
4.3 Uplink Payload	12
4.4 Downlink Payload	13
4.5 Integrate with Datasake	16
4.6 Alarm Base on Timeout	19
4.7 LEDs	20
5. Battery & How to replace	21
5.1 Battery Type and replace	21
5.2 Power Consumption Analyze	21
6. Use AT Command	23
6.1 Access AT Command	23
7. FAQ	24
7.1 How to upgrade the image?	24
7.2 How to change the LoRa Frequency Bands/Region?	24
7.3 Can I disable uplink for each event to save battery life?	24
8. Order Info	25
9. Packing Info	25

10. Support 25

1. Introduction

1.1 What is LWL02 LoRaWAN Door Sensor

The Dragino LWL02 is a LoRaWAN Water Sensor. When there is water between the two metal probes, LWL02 indicates a water leak event and uplink to IoT server via LoRaWAN network.

LWL02 is powered by 2 x AAA batteries and target for long time use, these two batteries can provide about 16,000 ~ 70,000 uplink packets, which result in 2 ~ 10 years battery life. After battery running out, user can easily open the enclosure and replace with 2 common AAA batteries.

The LWL02 will send periodically data every day as well as for each water leak event. It also counts the water leak times and calculate last water leak duration. User can also disable the uplink for each water leak event, instead, device can count each event and uplink periodically.

Each LWL02 is pre-load with a set of unique keys for LoRaWAN registration, register these keys to LoRaWAN server and it will auto connect after power on.



1.2 Features

- ✓ LoRaWAN Class A v1.0.3
- ✓ Frequency Bands: CN470/EU433/KR920/US915/EU868/AS923/AU915/IN865/RU864
- ✓ SX1262 LoRa Core
- ✓ Water Leak detect
- ✓ 2 x AAA LR03 Batteries
- ✓ AT Commands to change parameters
- ✓ Uplink on periodically and open/close action
- ✓ Remote configure parameters via LoRa Downlink
- ✓ Firmware upgradable via program port

1.3 Applications

- ✓ Smart Buildings & Home Automation
- ✓ Logistics and Supply Chain Management
- ✓ Smart Metering
- ✓ Smart Agriculture
- ✓ Smart Cities
- ✓ Smart Factory

1.4 Dimension



1.5 Firmware Change log

LWL02 use the same firmware as LDS01.

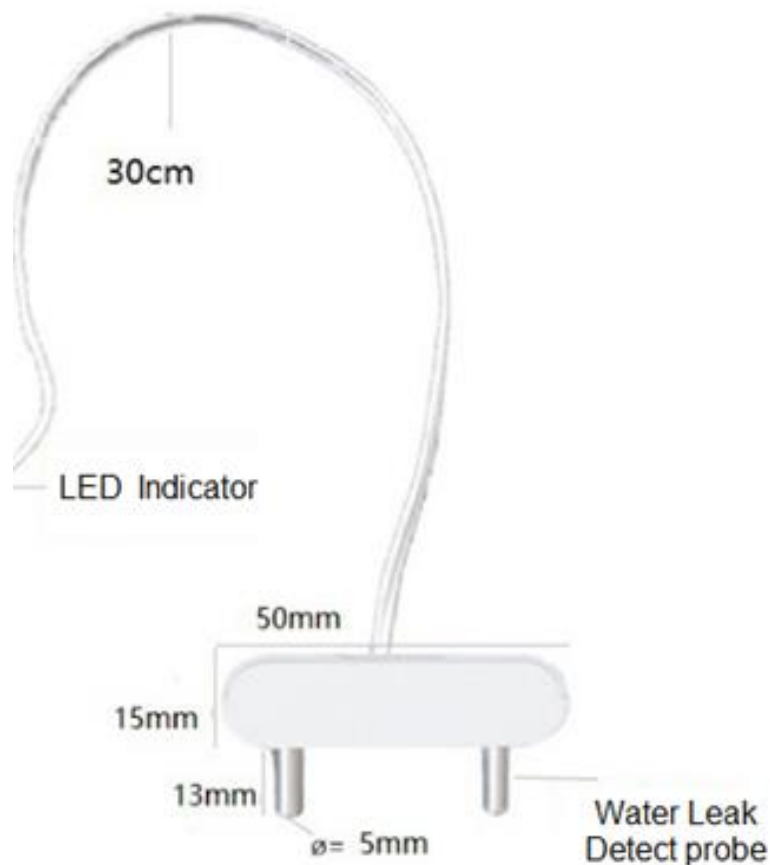
[LWL02 Image files – Download link](#)

2. Power ON LWL02

When receive the LWL02, please open the enclosure and add 2 x AAA batteries to power it. The [LED](#) will blink when device is powered.

3. How to install LWL02

When install the LWL02 on wall. Please install as below so the water leak probe will be soak in water for water detect purpose. The LWL02 main body is not water proof. Please don't let water go inside the LWL02 main body.



4. Operation Mode

4.1 How it works?

The LWL02 is configured as LoRaWAN OTAA Class A mode by default. It has OTAA keys to join network. To connect a local LoRaWAN network, user just need to input the OTAA keys in the network server and [power on](#) the LWL02. It will auto join the network via OTAA.

In case user can't set the OTAA keys in the network server and has to use the existing keys from server. User can [use AT Command](#) to set the keys in the devices.

4.2 Example to join LoRaWAN network

Here shows an example for how to join the [TTN V3 Network](#). Below is the network structure, we use [LG308](#) as LoRaWAN gateway here.



The LWL02 has water leak detect probe as above. When there is water between these two detect probe, they will be short and generate the water leak event. and send the status to LoRaWAN server. The LWL02 will uplink two type of messages to the server.

- ✓ A keep-alive message which send once per day.
- ✓ An emergency event message when detect a water leak. ([Alarm event can be disabled](#))
- ✓ A periodically update at every 10 minutes when in water leak.
- ✓ A message when switch from water leak to none water leak. ([Alarm event can be disabled](#))

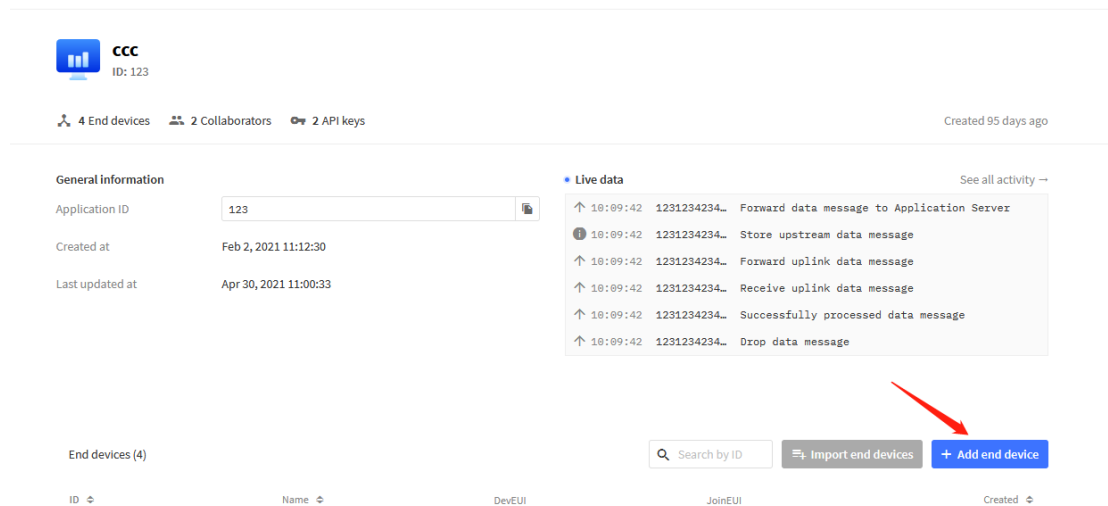
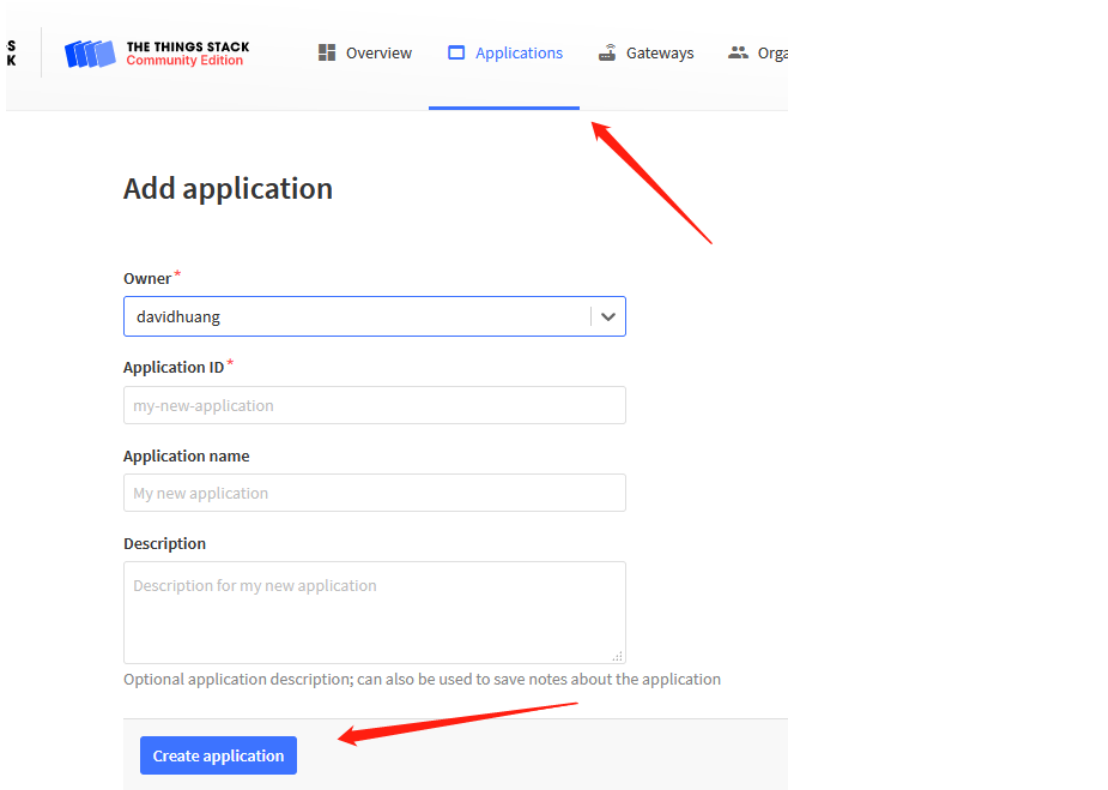
The LG308 is already set to connect to [TTN V3 network](#) . What we need to now is only configure the TTN V3:

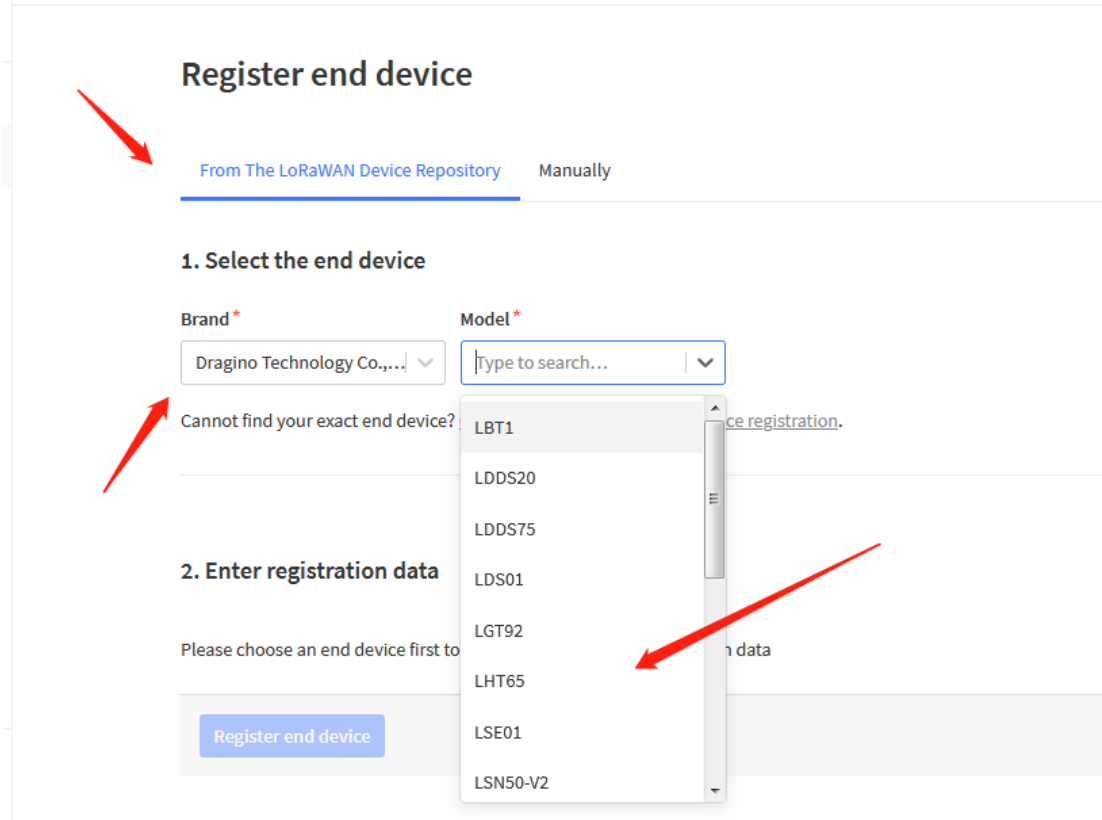
Step 1: Create a device in TTN V3 with the OTAA keys from LWL02.

Each LWL02 is shipped with a sticker with unique device EUI:

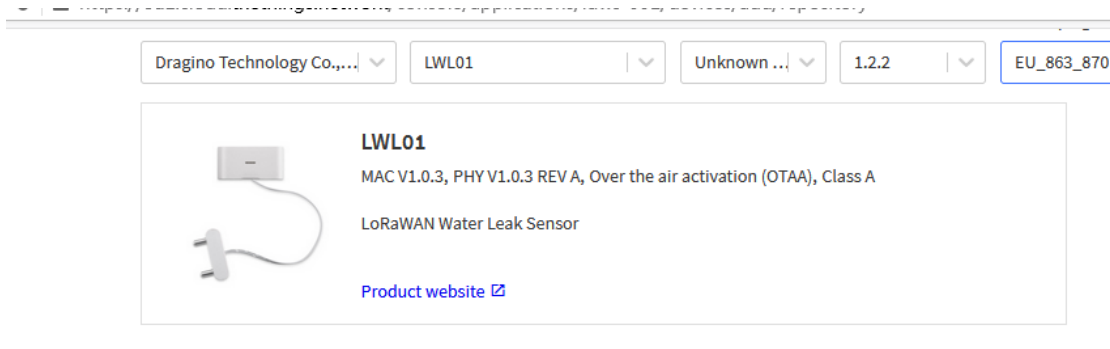


User can enter this key in their LoRaWAN Server portal. Below is TTN V3 screen shot:
Add APP EUI in the application.





LWL02 and LWL01 use the same payload structure. So choose LWL01 as the model here.



2. Enter registration data

Frequency plan ⓘ *

Select... | v

The frequency plan used by the end device

AppEUI ⓘ *

..... 00

The AppEUI uniquely identifies the owner of the end device. If no AppEUI is provided by the device manufacturer (usually for dev

You can also choose to create the device manually.

Register end device

From The LoRaWAN Device Repository [Manually](#)

Preparation

Activation mode *

- Over the air activation (OTAA)
- Activation by personalization (ABP)
- Multicast
- Do not configure activation

LoRaWAN version ⓘ *

Network Server address

Application Server address

External Join Server ⓘ

Add APP KEY and DEV EUI

2. Enter registration data

Frequency plan ⓘ *

Europe 863-870 MHz (SF12 for RX2)

The frequency plan used by the end device

AppEUI ⓘ *

.....00

The AppEUI uniquely identifies the owner of the end device. If no AppEUI is provided by the device manufacturer (usually for dev

DevEUI ⓘ *

.....

The DevEUI is the unique identifier for this end device

AppKey ⓘ *

.....

The root key to derive session keys to secure communication between the end device and the application

End device ID *

my-new-device

After registration

Step 2: [Power on](#) LWL02 and it will auto join to the TTN V3 network. After join success, it will start to upload message to TTN V3 and user can see in the panel.

4.3 Uplink Payload

Uplink Payload total 9 bytes.

Size(bytes)	2	1	3	3
value	Status&BAT	MOD Always:0x02	Total water leak events	Last water leak duration (unit: min)

Example:

```
payload: 4B E2 02 00 00 08 00 00 01  BAT_V: 3.042  LAST_WATER_LEAK_DURATION: 1  MOD: 2  WATER_LEAK_STATUS: 1  WATER_LEAK_TIMES: 8
```

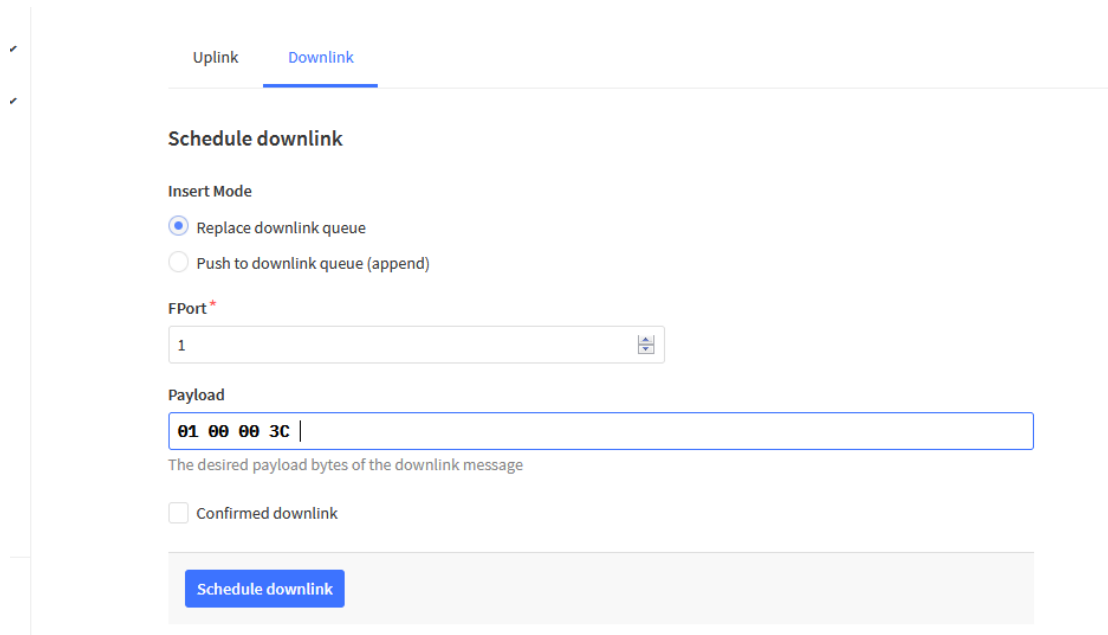
Example Payload Decoder in TTN V3:

http://www.dragino.com/downloads/index.php?dir=LoRa_End_Node/LDS01/Payload/

4.4 Downlink Payload

Downlink Control Type	Type Code	Downlink payload size(bytes)
TDC (Transmit Time Interval—Keep Alive Interval)	0x01	4
RESET	0x04	2
Set confirmed mode	0x05	2
Clear Counting	0xA6	2
Enable/Disable Alarm	0xA7	2
Control ADR/DR	0xA8	3
Set Alarm Timeout	0xA9	4

Example Downlink payload setting in TTN V3:



LoRaWAN private LoRaWAN networks - The Things Industries

Type Code 0x01

If the payload=0100003C, means to control the LWL02's Keep Alive interval to 0x00003C=60(S)

Type Code 0x04

If payload = 0x04FF, it will reset the LWL02.

Type Code 0x05

0x05 00: Set uplink to LoRaWAN unconfirmed mode

0x05 01: Set uplink to LoRaWAN confirmed mode

Type Code 0xA6

Example: 0xA601: Clear Counting

For LWL02: reset both count number and time.

Type Code 0xA7

0xA7 01 : Equal to AT+DISALARM=1

0xA7 00 : Equal to AT+DISALARM=0

Type Code 0xA8

Format: 0xA8 aa bb

aa: 1: Enable ADR; 0: Disable ADR (Same as AT+CADR command)

bb: set DR (Same as AT+CDATARATE ,only valid after ADR=0)

Example: 0x A8 00 02 : Set ADR=0 and DR=1

Type Code 0xA9

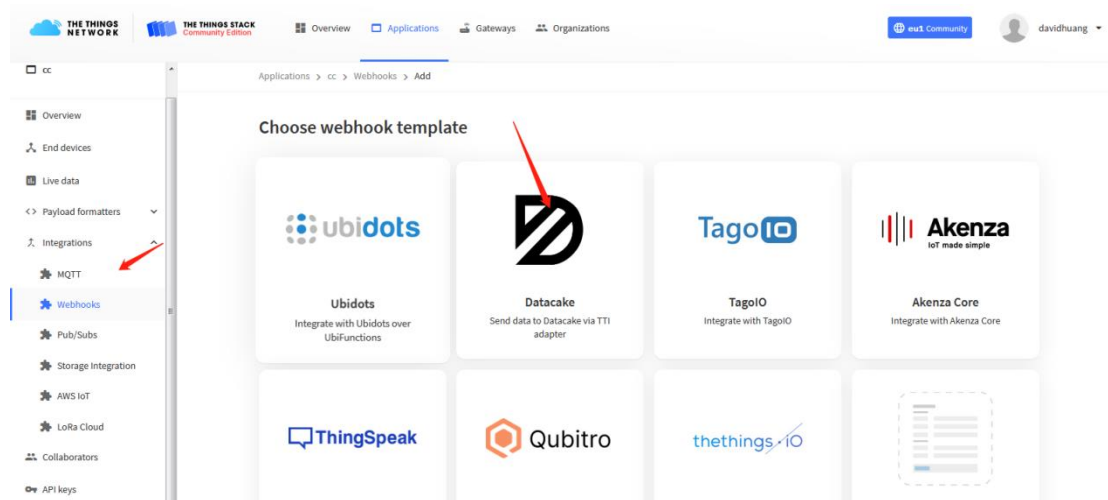
See [Alarm Base Timeout](#) for detail.

4.5 Integrate with Datacake

Datacake provides a human friendly interface to show the sensor data, once we have data in TTN V3, we can use Datacake to connect to TTN V3 and see the data in Datacake. Below are the steps:

Step 1: Be sure that your device is programmed and properly connected to the network at this time.

Step 2: To configure the Application to forward data to Datacake you will need to add integration. To add the Datacake integration, perform the following steps:



Applications > lgt92test > Webhooks > Add > Datacake

Add custom webhook

Template information



Datacake

Send data to Datacake via TTI adapter

[About Datacake](#) | [Documentation](#)

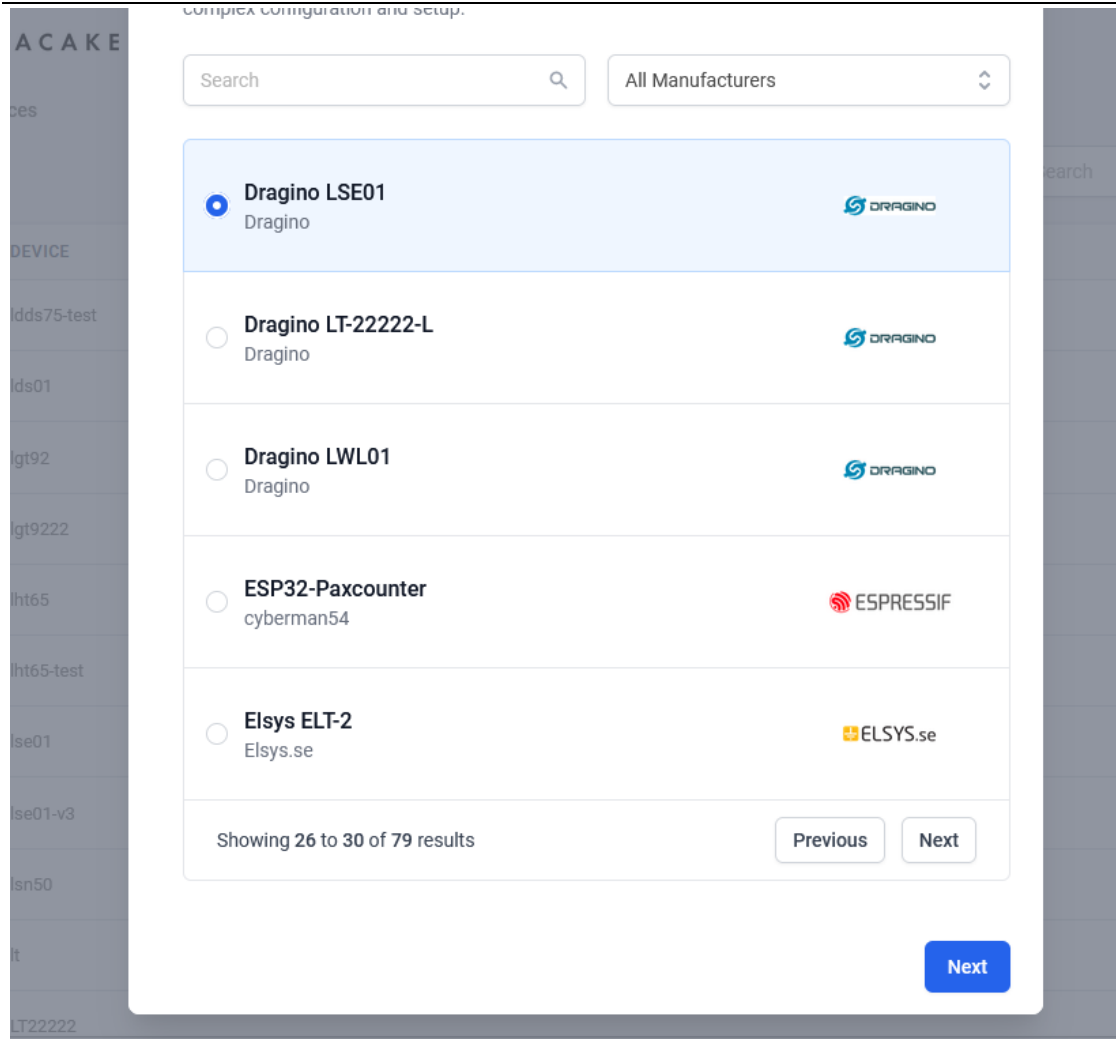
Template settings

Webhook ID *

Token *

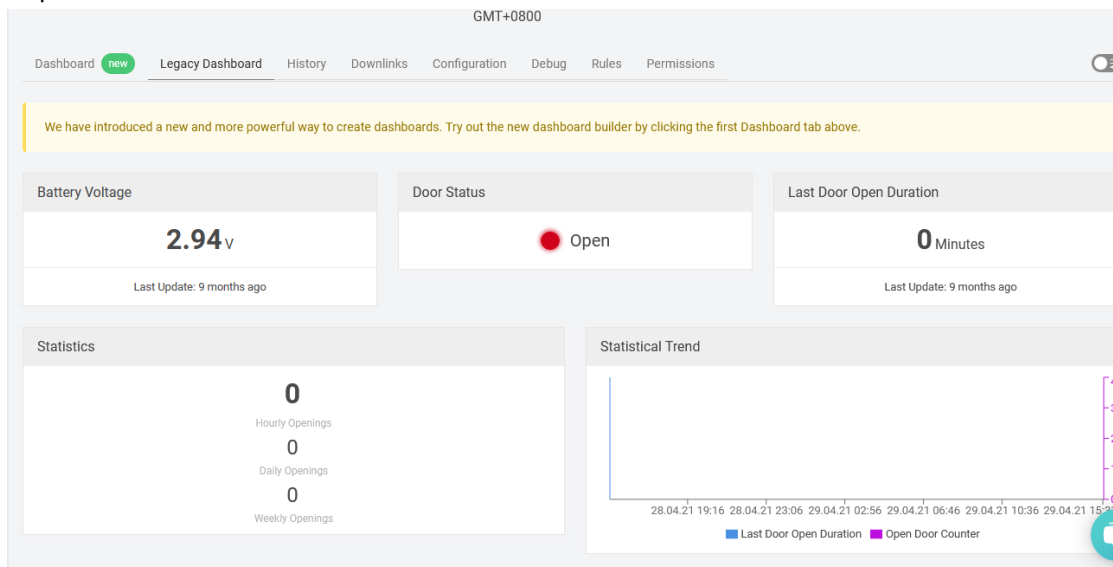
Datacake API Token

Create datacake webhook



Step 3: Create an account or log in Datacake.

Step 4: Search LWL02 and add DevEUI.



4.6 Alarm Base on Timeout

LWL02 can monitor the timeout for a status change, this feature can be used to monitor some event such as open fridge too long etc.

User configure this feature by using:

AT Command to configure:

- AT+TTRIG=1,30 → When status change from close to open, and device keep in open status for more than 30 seconds. LWL02 will send an uplink packet, the Alarm bit (the lowest bit of 10th byte of payload) on this uplink packet is set to 1.
- AT+TTIG=0,0 → Default Value, disable timeout Alarm.

Downlink Command to configure:

Command: 0xA9 aa bb cc

A9: Command Type Code

aa: status to be monitor

bb cc: timeout.

If user send 0xA9 01 00 1E: equal to AT+TTRIG=1,30

Or

0xA9 00 00 00: Equal to AT+TTRIG=0,0. Disable timeout Alarm.

4.7 LEDs

Action	LED behavior
Power On	GREEN on 1s, RED on 1s, BLUE on 1s
Joined successful	GREEN LED on 5s
Send an uplink message	GREEN LED blinks once
Got a downlink message	BLUE LED blinks once

5. Battery & How to replace

5.1 Battery Type and replace

LWL02 is equipped with 2 x AAA LR03 batteries. If the batteries running low(see 2.1v in the platform). User can buy generic AAA battery and replace it. Note:

- 1) The LWL02 doesn't have any screw, use can use nail to open it by the middle.
- 2) Make sure the direction is correct when install the AAA batteries.

Important Notice: Make sure use new AAA LR03 battery and the battery doesn't have broken surface.

Example of AAA LR03 batter:



5.2 Power Consumption Analyze

Dragino battery powered product are all runs in Low Power mode. We have an update battery calculator which base on the measurement of the real device. User can use this calculator to check the battery life and calculate the battery life if want to use different transmit interval.

Instruction to use as below:

Step 1: Downlink the up-to-date DRAGINO_Battery_Life_Prediction_Table.xlsx from:

https://www.dragino.com/downloads/index.php?dir=LoRa_End_Node/Battery_Analyze/

Step 2: Open it and choose

- Product Model
- Uplink Interval
- Working Mode

And the Life expectation in difference case will be shown on the right.

DRAGINO How to use:
 1. Please do not modify the formula in the table
 2. After selecting the product number and model, then select the TDC unit and finally enter the TDC, you can get the predicted battery life
 3. Explanation of abbreviations: WD -> Watchdog TX -> Transmit RX -> Receive

Battery Life Calculator

Product	battery capacity(mah)	
LD501_LoRaWAN_Door_Sensor	240	
UNIT	TDC (Uplink Interval)	Work Mode
min	20	MOD-1

	Sleep power (mA*ms)	Sampling power (mA*ms)	TX power (mA*ms)	RX1 power (mA*ms)	RX2 power (mA*ms)	Watchdog power (mA*ms)	Average power (mA)	Detect power (mA*s)	Life expectancy (yr)
KL868									
DR3_SF7_125K_14dB	8400	427.16444	7867.8544	886.55488	4097.083	757.1706667	0.01826885	-	1.5
DR3_SF8_125K_14dB	8400	427.16444	13210.2528	950.9483	4097.083	757.1706667	0.023192523	-	1.2
DR3_SF9_125K_14dB	8400	427.16444	23652.608	1088.038	4097.083	757.1706667	0.031986736	-	0.8
DR3_SF10_125K_14dB	8400	427.16444	42244.125	1461.8676	4097.083	757.1706667	0.047792297	-	0.6
DR3_SF11_125K_14dB	8400	427.16444	94013.4	2230.4828	4097.083	757.1706667	0.091599095	-	0.3
DR3_SF12_125K_14dB	8400	427.16444	168081	4097.083	4097.083	757.1706667	0.154625338	-	0.2
US915									
DR3_SF7_125K_20dB	8400	427.16444	8441.476	681.61809	1587.131	757.1706667	0.016908376	-	1.6
DR3_SF8_125K_20dB	8400	427.16444	15170.785	813.6401	1587.131	757.1706667	0.022707198	-	1.2
DR3_SF9_125K_20dB	8400	427.16444	27254.383	941.388	1587.131	757.1706667	0.03279472	-	0.8
DR3_SF10_125K_20dB	8400	427.16444	48745.32	995.2243	1587.131	757.1706667	0.050783361	-	0.5

6. Use AT Command

6.1 Access AT Command

LWL02 supports AT Command set. User can use a USB to TTL adapter to configure LWL02 via use AT command, as below.



USB to TTL <- -> LWL02

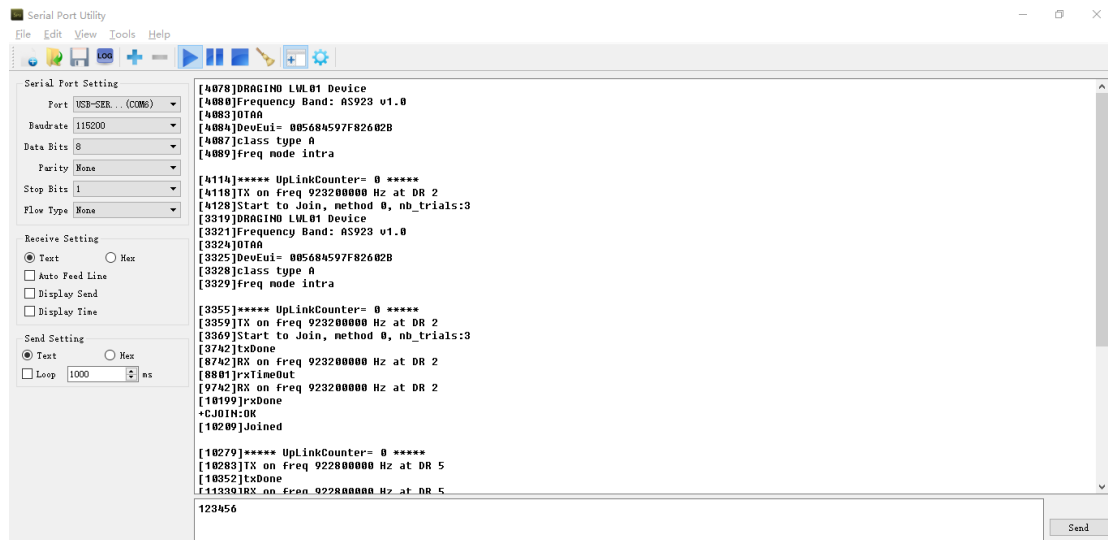
RX <- -> TX

TX <- -> RX

GND <- -> GND

In PC, User needs to set **serial tool**(such as [putty](#), SecureCRT) baud rate to **115200** to access to access serial console of LWL02. Below is the output for reference:

The AT Access password is **123456**.



Each AT Command need to **add an ENTER** at the end before send.

When entering the first command, the **RED LED** will on and user can now input AT Commands. After input all needed AT Commands, please input AT+CLPM=1 to set the device to work in Low Power mode and **RED LED** will be off.

More detail AT Command manual can be found at [AT Command Manual](#)

7. FAQ

7.1 How to upgrade the image?

User can upgrade the firmware of LWL02 for bug fix, new features, or change working region. The upgrade instruction is here:

http://wiki.dragino.com/index.php?title=Firmware_Upgrade_Instruction

7.2 How to change the LoRa Frequency Bands/Region?

If user has for example US915 frequency and want to change it to AS923 frequency. User can follow the introduction for [how to upgrade image](#). When download the images, choose the required image file for download.

7.3 Can I disable uplink for each event to save battery life?

Yes, User can use below method to disable this:

via AT Command:

AT+DISALARM=1, End node will only send packet in TDC time.

AT+DISALARM=0, End node will send packet in TDC time or status change for door sensor.

via LoRaWAN downlink Command:

0xA701 : Equal to AT+DISALARM=1

0xA700 : Equal to AT+DISALARM=0

8. Order Info

Part Number: LWL02-XXX

XXX:

- **EU433:** frequency bands EU433
- **EU868:** frequency bands EU868
- **KR920:** frequency bands KR920
- **CN470:** frequency bands CN470
- **AS923:** frequency bands AS923
- **AU915:** frequency bands AU915
- **US915:** frequency bands US915
- **IN865:** frequency bands IN865
- **CN779:** frequency bands CN779

9. Packing Info

Package Includes:

- ✓ LWL02 x 1

Dimension and weight:

- ✓ Device Size: 69.2 x 29.2 x 14.8 mm

10. Support

- Support is provided Monday to Friday, from 09:00 to 18:00 GMT+8. Due to different timezones we cannot offer live support. However, your questions will be answered as soon as possible in the before-mentioned schedule.
- Provide as much information as possible regarding your enquiry (product models, accurately describe your problem and steps to replicate it etc) and send a mail to

support@dragino.com