

## EXT-Module, Rev C

EXT-module is a module that fits inside the ELT LoRa and is intended for connecting external power and actuators and be used as a class C device. It can also connect to sensors and be used as a class A device.

### Features

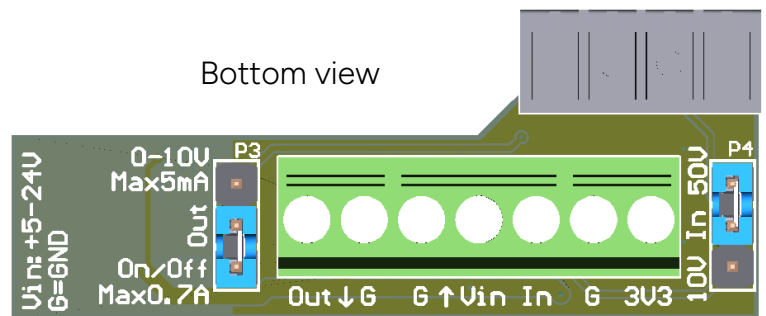
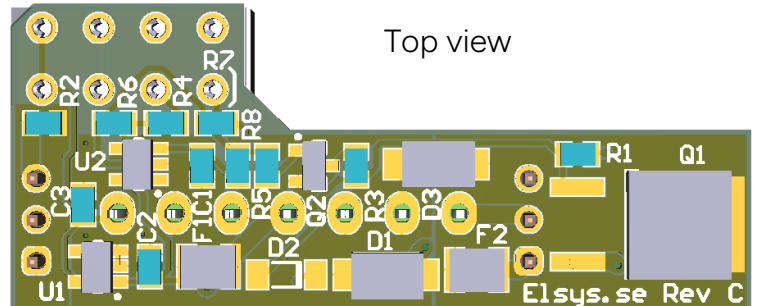
- Connection for external power
- On/Off output
- 0 – 10 V output
- General purpose input
- Fits inside the ELT-2 box
- Powers the ELT-2
- Switching between functions are done with jumpers.

Input voltage: 5 – 24 V DC

On/Off output: Max 0.7 A

0 – 10 V output: Max 5 mA

Input can be scaled to allow up to 50 V



On/off or 0-10V output (for 0-10V, ext. power needs to be at least 11V)

External power in, 5-24V

Input to ELT LoRa. 10 or 50V range. Connect 500 ohm resistor between inputs for 4-20mA (10V range)

Constant 3.3V output.  
Max 10mA @ 12V in,  
max 5mA @ 24V in

