

BelSenso FM432p

LoRa Pulse Multifluid Tracker



ATEX
Zone 1



BelSenso FM432p



LoRa Pulse Multifluid Tracker

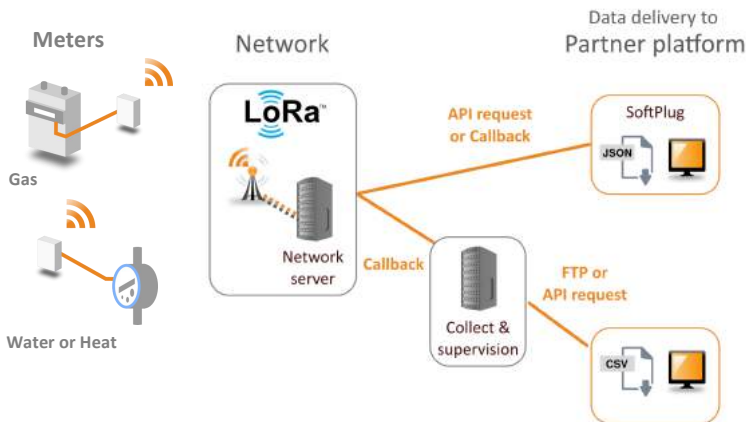
BelSenso FM432p is a multifluid LoRawan reader transmitting « pulse » data consumption from a Gas, Water or Heat meter to a server. It provides the ideal starting point for analyzing the level of consumption and offers a complete interoperability with IoT LoRa networks in order to rapidly report any change. This device is perfectly designed for deployment of energy efficiency services for Small and Medium Buildings.

Benefits

- ⇒ **Universal:** compliant with Pulse Multifluid meters
- ⇒ **Plug & Play:** self installation (< 5mn)
- ⇒ **Precision:** monitoring consumption every 10mn/15mn/1h
- ⇒ **Autonomy:** up to 10 years with battery
- ⇒ **Certification:** ATEX Zone 1



Operational



Application

Smart Home



Multifluid
monitoring

Smart Building



Energy & Water
control and savings

Smart City



Multifluid
budget control

General and technical features

| | BelSenso FM432p |
|--------------------------|---|
| Input | Pulse Input (open collector or REED) |
| Output | LoRawan 868 Mhz Network - LoRaWan 1.0 Internal antenna (PCB) - RF Power 14 dbm (25mw) |
| Operational | Red and Green LED indicators T°: -15°C to +45°C |
| Data | Load curve measurement every 10mn, 15mn or 1h Transmission 5 to 20 messages/day (*) Data delivery (csv/json format) using FTP or API request or Softplug (.exe) |
| Power supply | Internal battery 3.6V, autonomy of 10 years |
| Certification | ATEX zone 1: II 2 G Ex ib op is IIA T3 Gb |
| Size & Weight | Radio box: weight: 130gr - height: 95mm - width: 75mm - depth: 30mm |

FM432p-a



FM432p-n



References

| | |
|----------------------|---|
| FM432p-a_10mn | LoRa Pulse Multifluid Tracker - data 10mn (**) - Atex |
| FM432p-a_15mn | LoRa Pulse Multifluid Tracker - data 15mn (**) - Atex |
| FM432p-a_1h | LoRa Pulse Multifluid Tracker - data 1h (**) - Atex |
| | |
| FM432p-n_10mn | LoRa Pulse Multifluid Tracker - data 10mn (**) - Non-Atex |
| FM432p-n_15mn | LoRa Pulse Multifluid Tracker - data 15mn (**) - Non-Atex |
| FM432p-n_1h | LoRa Pulse Multifluid Tracker - data 1h (**) - Non-Atex |

(*) Based on complete network availability and depending on the version (1h, 10mn)

(**) The Radio Box includes 2 Lithium size A batteries

Contact:

Fludia - 4 ter rue Honoré d'Estienne d'Orves - 92150 Suresnes - France
Phone: +33 (0)1 83 64 13 90 - Mail: contact@fludia.com - www.fludia.com