

S-GATEWAY EU

Ordering info: RE.45.SGEU

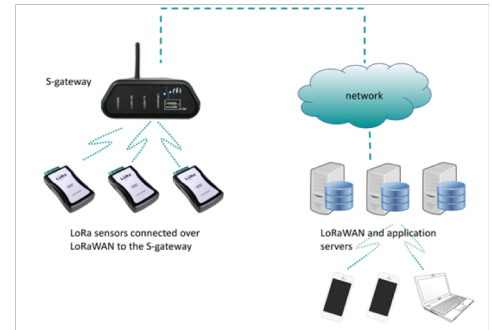
Picocell indoor gateway including a GPS receiver for advance timekeeping

Doc.nr.: SA2018SGATEWAY v1.0

The S-gateway is a Picocell, indoor LoRa gateway for enterprise and lightweight industrial applications that require Always On connectivity for Internet of Things (IoT) applications. It is very low cost and it is very easy to setup making it ideal for zero-touch high volume deployments. LoRa provides a low-cost way to connect battery operated devices to the network infrastructure.

LoRa RF technology has been pioneered by Semtech and is a 2-way wireless solution, operating in the license exempt ISM bands, that complements M2M cellular infrastructure. The function of the S-gateway is to forward received LoRa RF packets to an external server through a IP/UDP link. It also transmits LoRa RF packets that are sent by the external server. The S-gateway is standard equipped with one LoRa transceiver (8 channels) and a uBlox MAX-M8W GPS receiver for advance timekeeping; enabling class-B operation. The S-gateway comes standard with RFI Linux (4.9.40) and LoRa packet forwarder 4.0.1. pre-installed on the micro SD card. Advanced users can easily replace the pre-installed image their own version(s) of the open source software.

Network Infrastructure



Network Infrastructure

Features

Connectors	
Ethernet	RJ45
USB Host	USB-A female
LoRa	SMA connector
GPS	SMA connector
Power Requirements	
Power Adapter	100-240V/AC to 5V/DC
Unit ships standard with an universal power 5V adapter	
Environmental	
Operating Temperature	-0° to +70°C with no derating
Storage Temperature	-40° to +90°C
Relative Humidity	5% to 95% non-condensing
Altitude	0-10,000 feet
Cooling	Convectonal - non vented case
Mechanical	
Case Dimensions	127.00L x 96.52W x 38.10H (mm)
Weight	300 grams, 10.6 Ounces

LoRa 868MHz (EU) long range operation, up to 15 km range in line-of-sight and < 2 km in urban environment

8-channel design using SX1308 and 2x SX1257 chipset
Microchip AT91SAM9G25 MPU (ARM9@400Mhz)
DDR2 RAM 128 MB @ 16 bit

MicroSD holder push-pull, 16GB micro SD card included

Powered by 5V DC, power supply included

10/100Mbps Ethernet interface

1 full-speed USB host connector

Onboard GPS uBlox Max8W receiver allowing for GPS time-sync for class-B operation

Command line interface

Web interface for local & remote configuration

Works with all major LoRaWAN Network Servers

Remote configurable and remote software upgrades

Black, flame retardant ABS plastic enclosure

2 Year Warranty



Semtech, the LoRa logo and LoRa are registered trademarks of Semtech Corporation.

All information contained herein is believed to be accurate and is subject to change without notice. No responsibility is assumed for its use. RFI Engineering reserves the right to make changes without notice, design, product components, and product manufacturing methods.

Global Sales information RFI Engineering: +31 36 750 8268 or sales@rfi-engineering.com. For more info www.rfi-engineering.com.

Copyright 2018. All Rights Reserved. RFI Engineering B.V., Markerkant 13-76, 1314 AN Almere, The Netherlands.