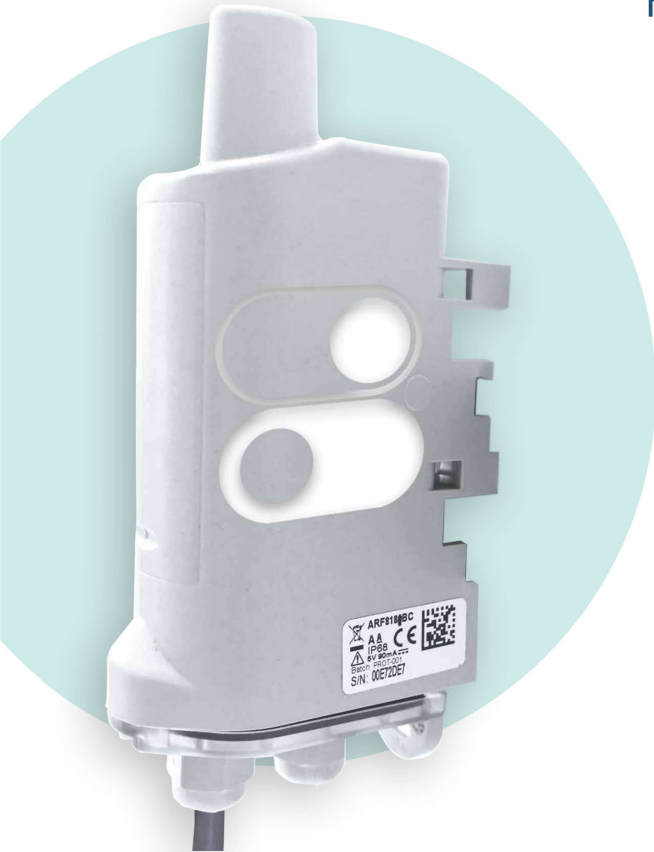


# DRY CONTACTS

## IP68

Report 0-1 states, control relays or equipment, measure machine operating time.

Functions: **4 configurable inputs/outputs**



Automatically activate or restart equipment remotely or following an event



**ALERT**

Alert on events:

- Fault feedback,
- Alert on detected event,
- Access control,
- Detection of water presence.

Alert if an event exceeds a certain duration



**MONITOR**

Count the time spent in a given state



Additional features:

- Periodic and/or event mode
- Error or Default management: hardware error, configuration inconsistency and low battery alert
- Timestamp of the frame (LoRaWAN)
- Network Quality Test at start-up (LoRaWAN)
- Class C LoRaWAN



Detect the opening of a door in a restricted area.



Count the time a fridge has been left open.



Automatically restart a machine following the triggering of an event.

# TECHNICAL SPECIFICATIONS



## LoRaWAN ARF8170BCA

Mechanical specifications	
Weight	87 g (battery included)
Dimensions	132 x 62 x 34 mm
Enclosure	IP68, EMERGE™ PC 8731HH grey resin (casing), EMERGE™ PC 8430-15 transparent resin (sole)
Mounting	DIN Rail, Tube, Wall, Collar
Cable length	70 cm + 10 cm of stripped wire
Operating conditions	
Temperature	-25°C / +70°C
Humidity	0 to 85% RH (non-condensing)
Device Power Supply	
Battery Type	1 replaceable battery or external power supply
Expected Battery Life	For 1 frame every 4 hours (6 frames/day), default open state entry: - LoRaWAN SF12 or SF7: > 10 years
External power supply	Input range 4.5 - 6.5 V - Max current 110mA
Device configuration	
Local device configuration	IoT Configurator
Remote device configuration	Downlink via the network or via the KARE platform
Configuration and firmware update from the air	KARE+ compatible
Security	PIN/PUK Code protection
Radio/Wireless	
Supported regions	LoRaWAN EU863-870
Wireless Security	AES-128 data encryption
Class	Class A & Class C
Supported LoRaWAN features	OTAA, ABP, ADR, adaptive channel setup
RF transmit power	14 dBm
Sensitivity	-136 dBm LoRaWAN @SF12
Regulations and certifications	
Standard	Directive 2014/53/UE (RED)

INPUTS		OUTPUTS	
Number	up to 4 by configuration	Number	up to 4 by configuration
Voltage	0 - 24 V	Charging voltage	0 - 24 V
Equivalent input resistance	500 kΩ	Recommended dissipation max current	100 mA
Input frequency	10 Hz	Output frequency	10 Hz

