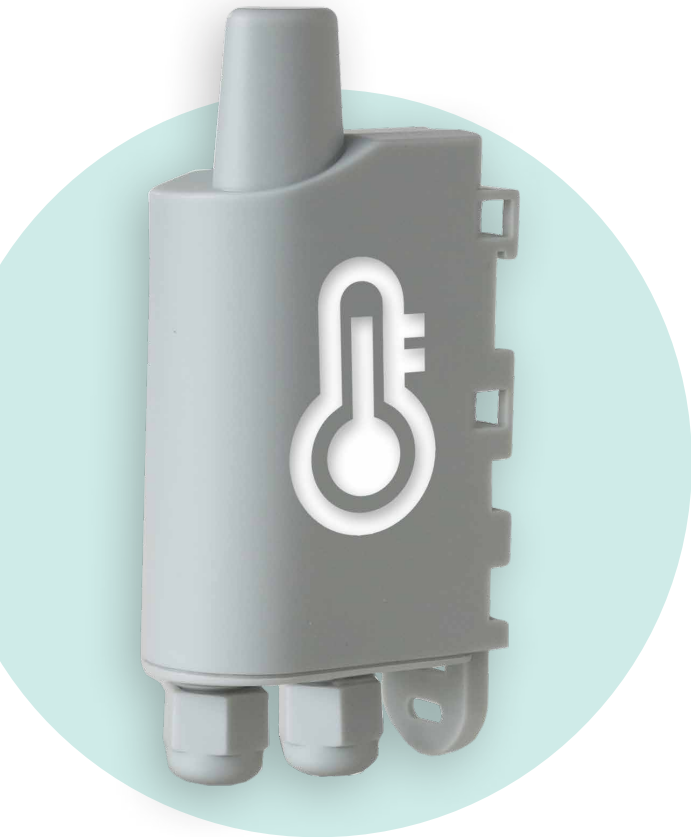


# TEMP 2S 3

Measure temperatures together in two places.



ALERT

- Provide warnings should thresholds be exceeded



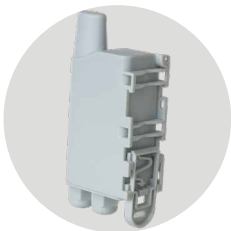
MEASURE

- Monitor temperature changes



MONITOR

- Measure temperatures
- Identify temperature losses



## BENEFITS

- Two remote probes
- Locally and remotely configurable
- Battery-powered stand-alone product
- Data logging for optimal autonomy
- Redundancy for better service continuity



**FUNCTION**

Temperature

# PRODUCT USES

---



Monitor the flow and return temperatures of the hydraulic circuits.



Monitor the temperature in a water circuit Sanitary Hot Water (DHW) to avoid the multiplication of bacteria called Legionella causing legionellosis.

## TECHNICAL SPECIFICATIONS

---

- T° range remote probe:  
Sensor: -55 + 155°C (+/-0,1) / Wire: -30 + 105°C
- Periodic mode with or without history
  - Alarm on exceeding threshold
    - Data redundancy
    - Replaceable battery
  - Dimensions: 105 x 50 x 27 mm
  - Casing: IP67 (IP68 on request)
    - Configurable Life Screen

- Integrated fastening system: DIN rail, tube, wall, flange
- Zone: Sigfox: RC1 / LoRaWAN: EU863-870 / WM-Bus: 868 on demand (MoQ)
- Operating Temperature Range: -25 + 70°C
  - Weight: 130 g
  - Standards: Directive 2014/53/EU (RED)
- Product error alert, configuration error, low battery

